

CANCapture™ Advanced CAN Diagnostic Software



CANCapture™

Software Installation Manual

CHANGE RECORD				
REV	DATE	SECTION / PAGE	REASON / REMARKS	MODIFIED BY
1.1	2008.06.13	All	Release	C. LELA
A	2014.11.17	All	Document Revision – All Sections	PEARSON

1 TABLE OF CONTENTS

1	TABLE OF CONTENTS.....	3
2	INTRODUCTION.....	4
3	SOFTWARE INSTALLATION	5
3.1	Start Installation	5
3.2	Security Warning	5
3.3	CANCapture Setup Wizard	6
3.4	License Agreement Window	7
3.5	Select Installation Folder Window	7
3.6	Confirm Installation.....	10
3.7	Installing CANCapture	11
3.8	Installation Complete	12

TRADEMARK STATEMENT:

CANCapture™ is a trademark of Enovation Controls, LLC.

2 INTRODUCTION

Thank you for purchasing CANCapture from EControls (a subsidiary of Enovation Controls, LLC). CANCapture is the complete Controller Area Network (CAN) solution that offers every feature one would expect from a CAN diagnostic and analysis tool and more.

To start using CANCapture you will first need to install the software. Please refer to the steps contained in the following sections of this document for software installation instructions.

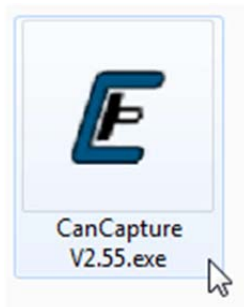
3 SOFTWARE INSTALLATION

3.1 Start Installation

- 1) Locate the CANCapture installer file CANCapInstaller_Vx.x.exe.

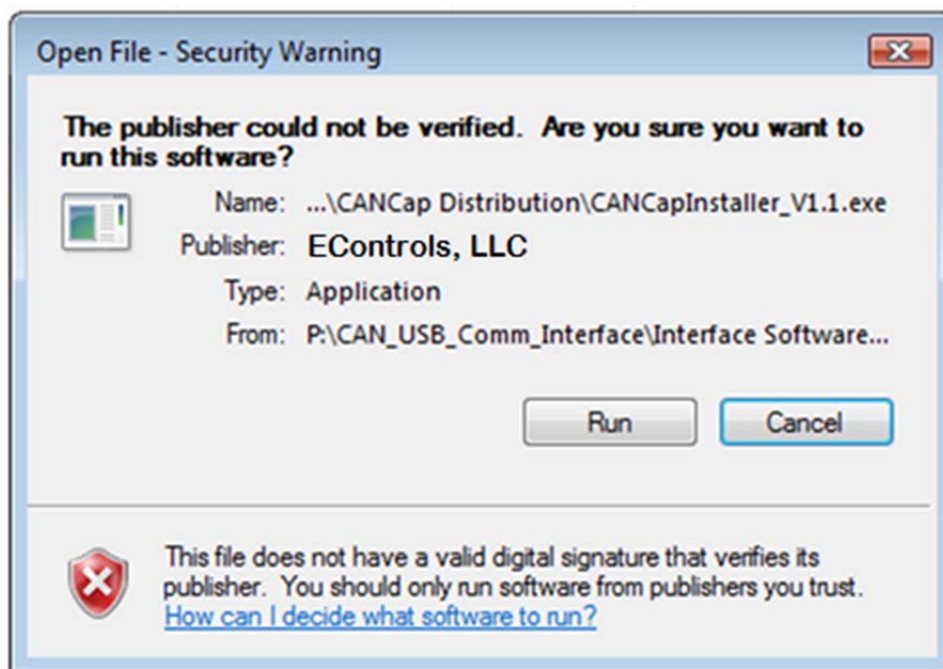
NOTE: (x.x) will be a decimal number value representing the most recent revision of the software.

- 2) Double click with the right mouse button on the file name or installer icon.



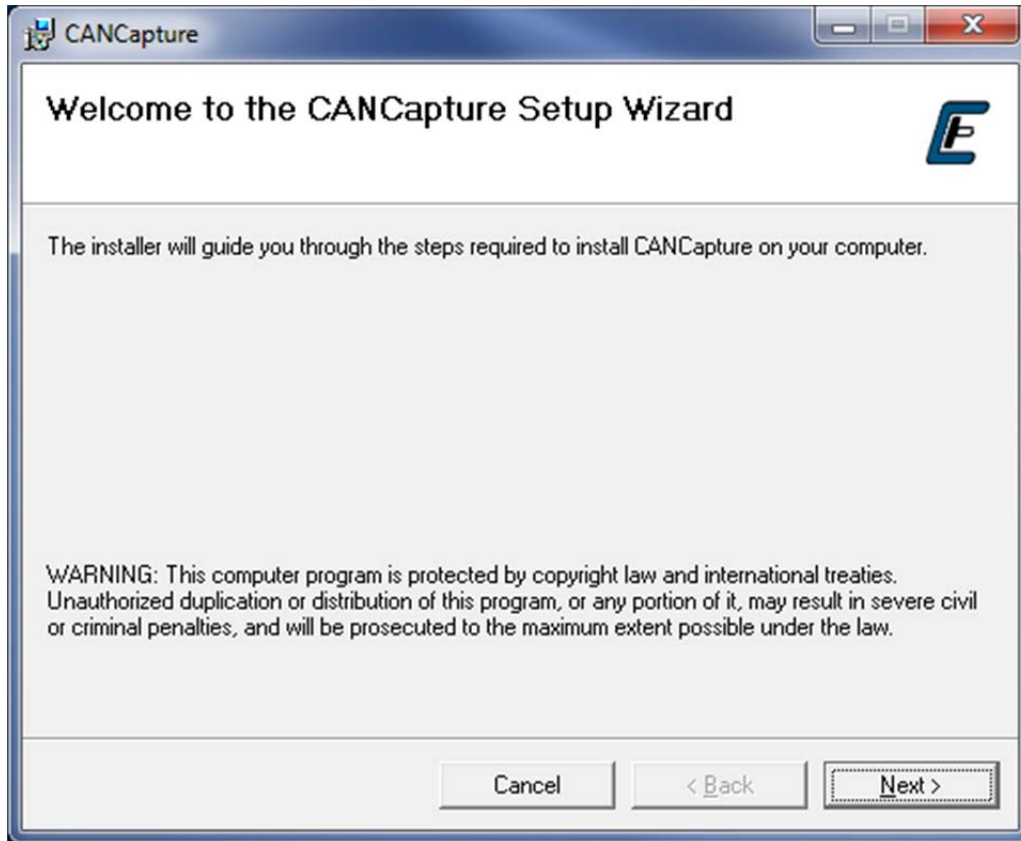
3.2 Security Warning

- 3) (If the following window opens) Select **[Run]** with the mouse cursor and double click with the left hand mouse button.



3.3 CANCapture Setup Wizard

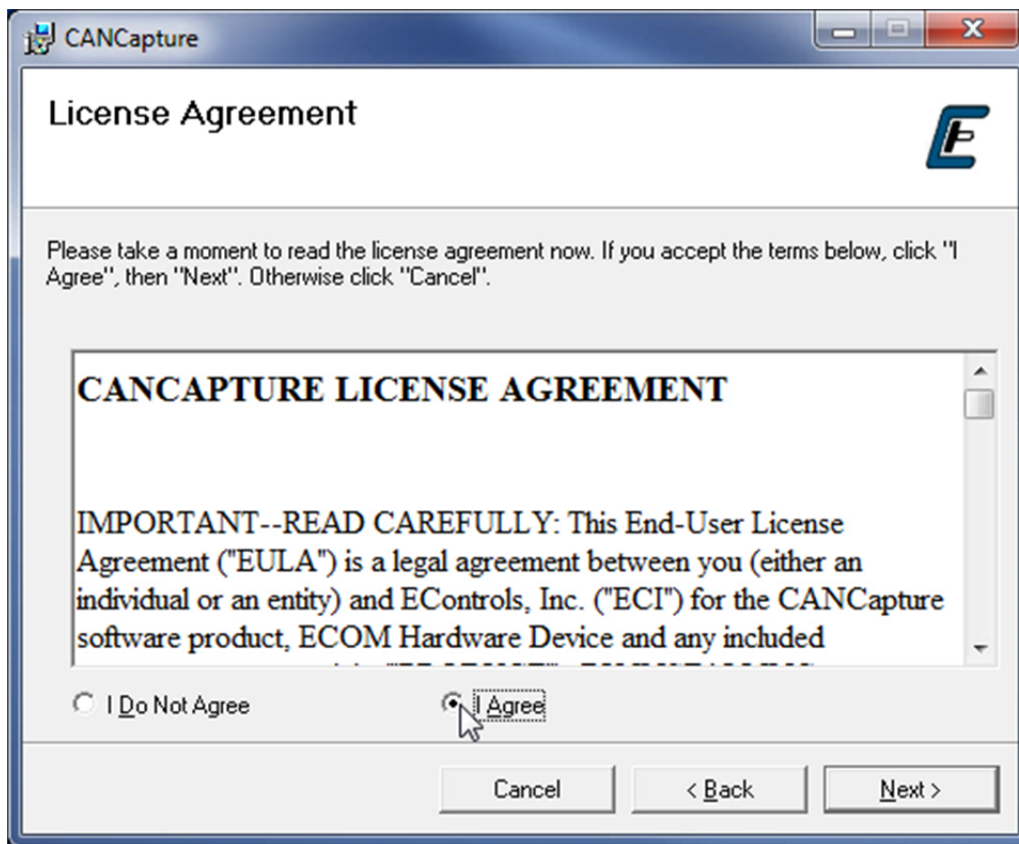
The CANCapture Setup Wizard will now open.



- 4) Select [**Next >**] with the mouse cursor and double click with the left hand mouse button.

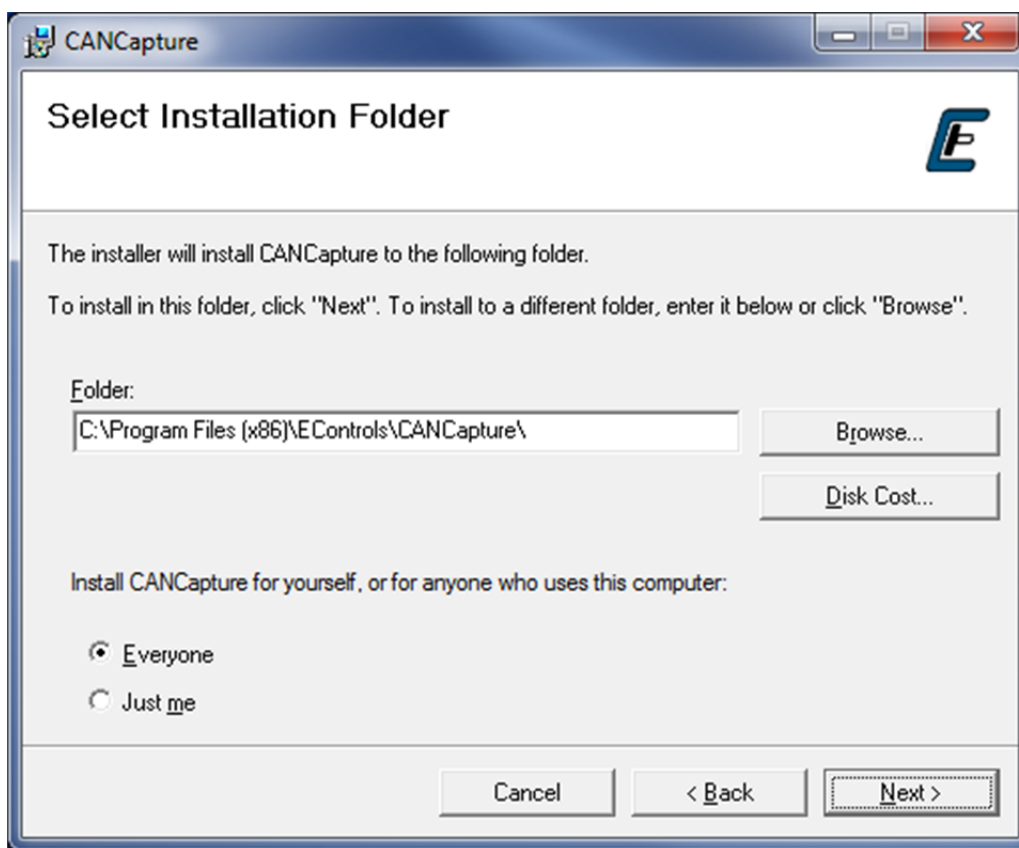
3.4 License Agreement Window

The License Agreement Window will now open. Please read the CANCapture License Agreement, then select **[Next>]**.



3.5 Select Installation Folder Window

The Select installation Folder Window will now open allowing you to select the disk drive and folder where you want to install the **CANCapture** software.

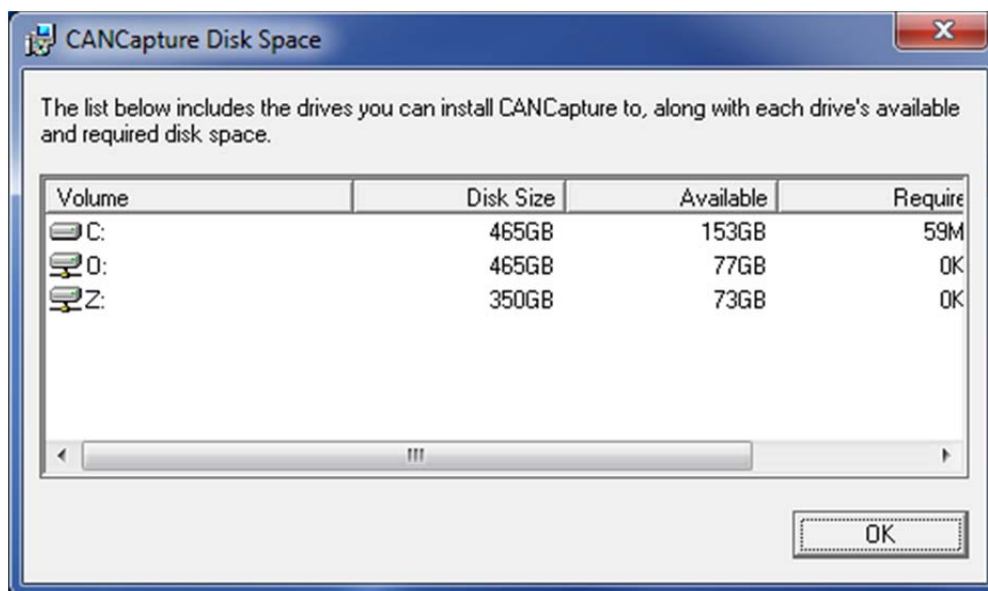


- 5) Select the folder where you want **CANCapture** to reside.

NOTE: The default folder is [C:\Program Files (x86)\EControls\CANCapture\]. This folder and location will appear in the **Folder:** field on the Select Installation Folder window.

If you want to install **CANCapture** in a different location select [**Browse...**] with the mouse cursor and double click with the left-hand mouse button. You may then browse to a different location on your computer and when you are satisfied double click the location with the left hand mouse button. The installer will return to this window with the new location indicated on the **Folder:** window.

- 6) If you are concerned about the disk space required for the installation of **CANCapture** you may select [**Disk Cost...**]. The following window will open.

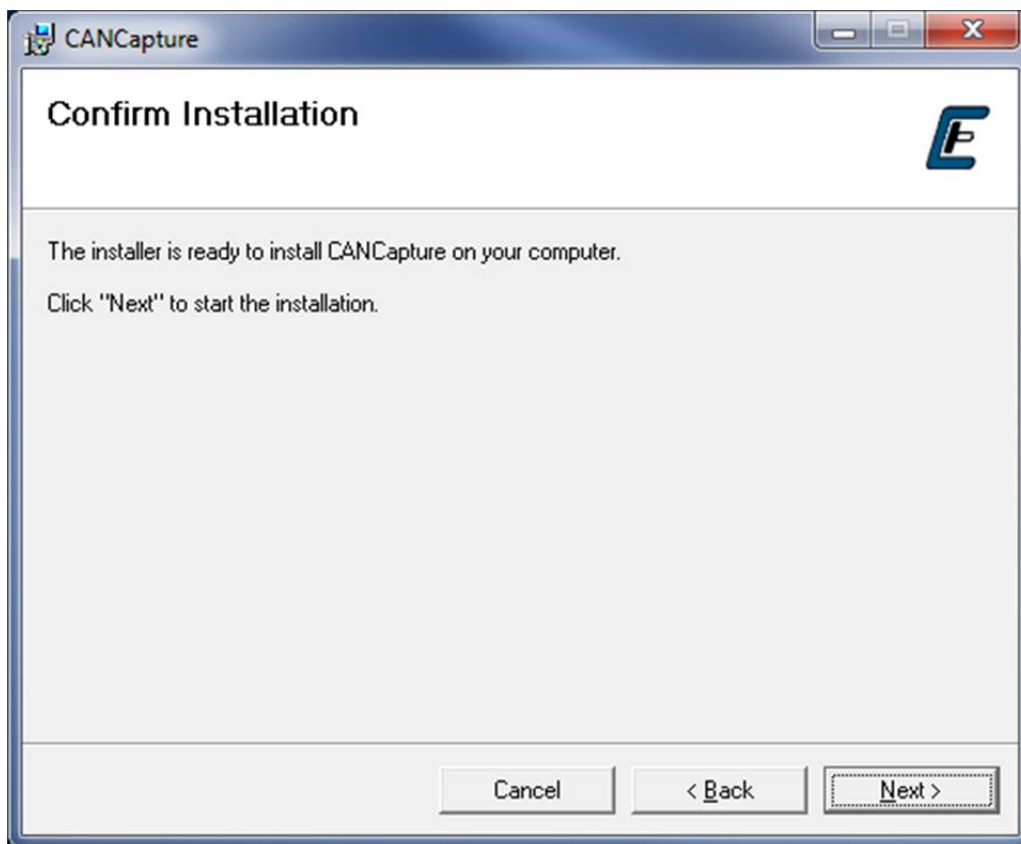


This will display the total size of each of your disk drives, the space that is available on each disk drive, and space required to install **CANCapture** on the disk drive selected. You may close this window and return to the previous window by selecting [**OK**] with the mouse cursor and clicking with the left hand mouse button.

- 7) You may now select to install the software for yourself, or for anyone that uses this computer.
- Select **Everyone** if you want to allow any user of this machine to have user rights to this copy of **CANCapture** or
 - Select **Just me** by placing the mouse cursor over the selection circle preceding the selection and clicking with the left hand mouse button.
- 8) When you are satisfied with location where the **CANCapture** software will be installed select [**Next >**] with the mouse cursor and double click the left-hand mouse button.

3.6 Confirm Installation

The Confirm Installation Window will now appear.



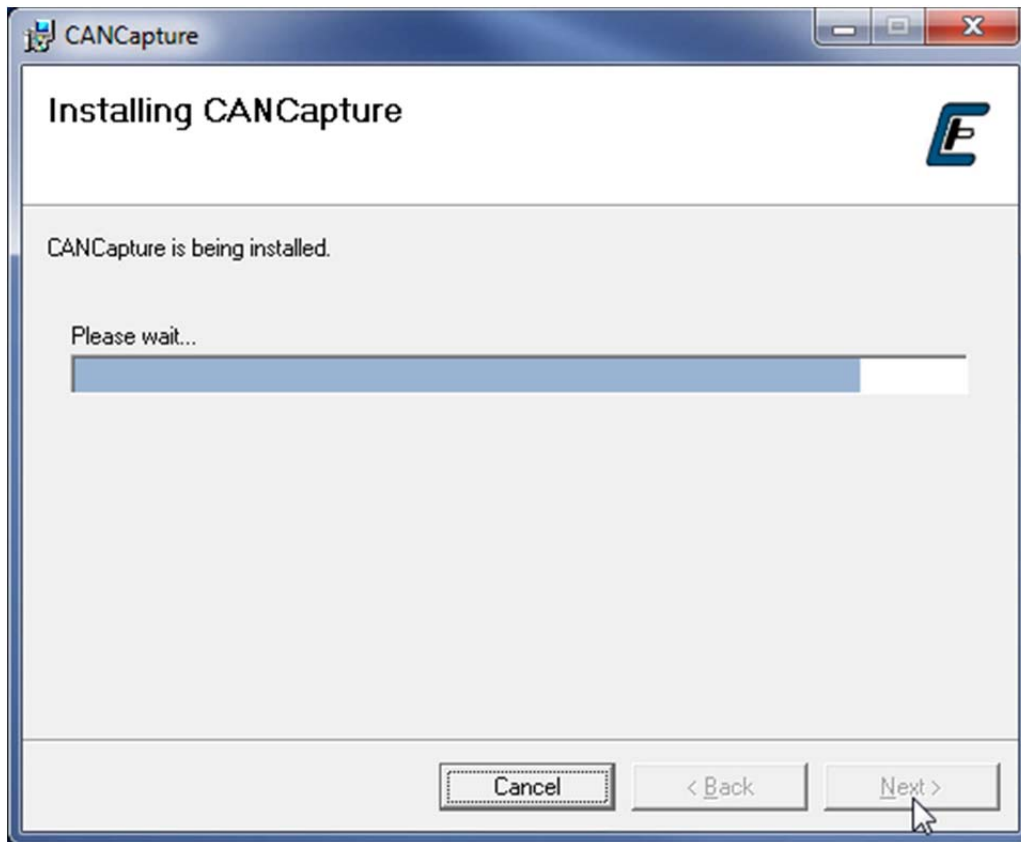
- 9) If you are satisfied with your selections and want to proceed with the installation select **[Next >]** with the mouse cursor and double click the left-hand mouse button.

NOTE: Otherwise you can go back and change a selection by selecting **[< Back]** with the mouse cursor and double clicking with the left-hand mouse button.

NOTE: You may cancel the entire installation by selecting the **[Cancel]** option at any time by selecting the **[Cancel]** with the mouse cursor and double clicking with the left-hand mouse button.

3.7 Installing CANCapture

The **Installing CANCapture** progress window will now open. This window indicates the current progress of the installation.

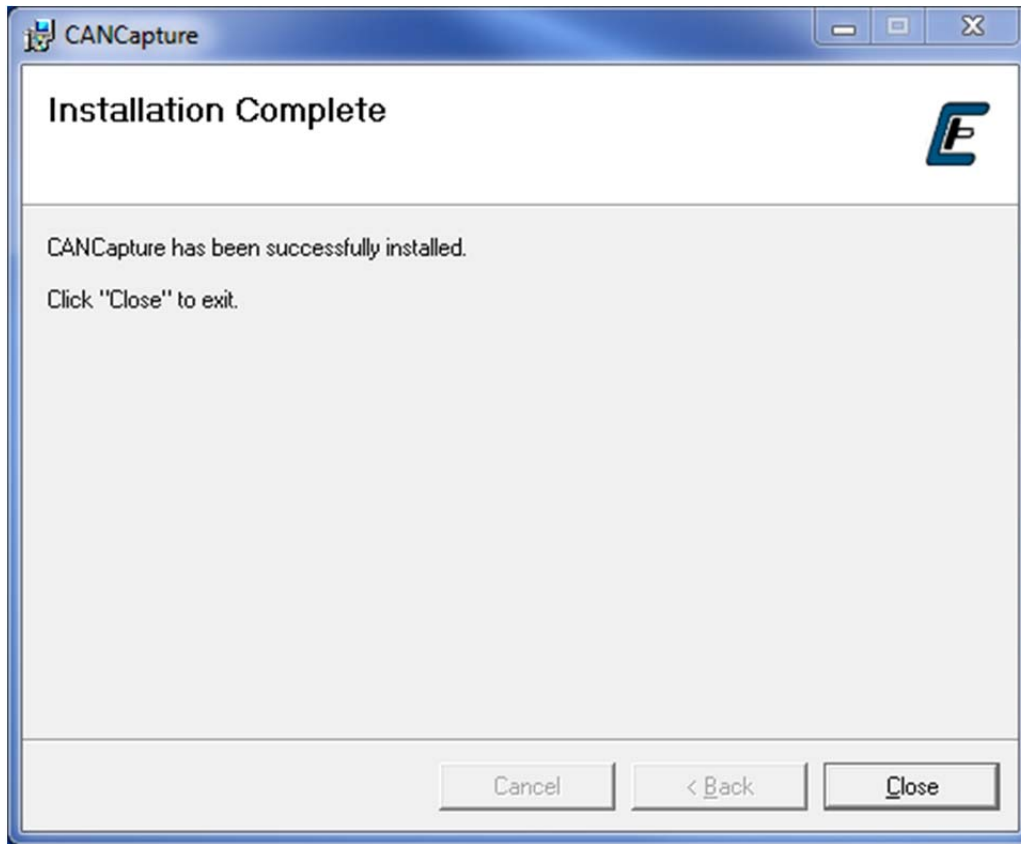


- 10) If you wish to cancel the installation select **[Cancel]** with the mouse cursor and double the left hand mouse button prior to the installation being completed.

3.8 Installation Complete

The Installation Complete window will now open indicating the installation was successfully completed.

- 11) Select **[Close]** with the mouse cursor and double click with the left-hand mouse button.



You are now ready to start using **CANCapure!**