



CANCapture Software Installation Manual
Version 1.1

1 Software Installation

Installation Procedure

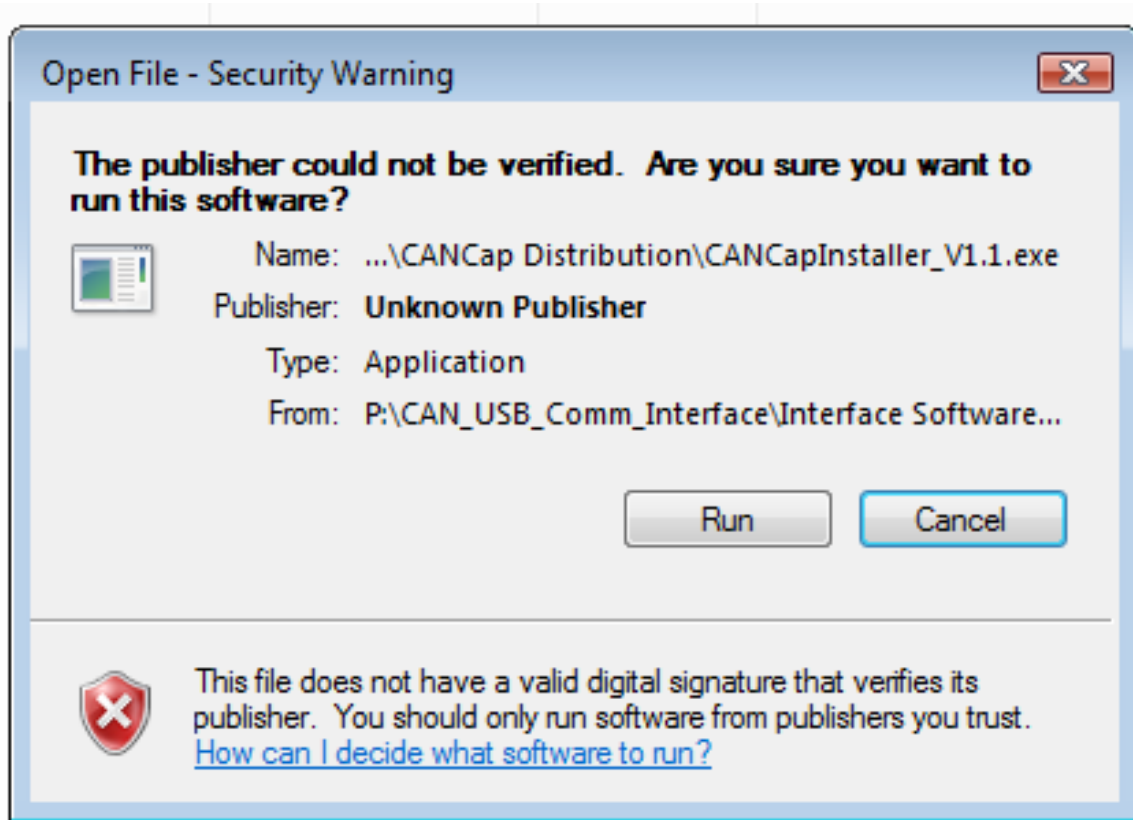
Locate the CANCapture Installer_Vx.x .exe
(x.x) will have a number representing the most recent revision of the software.

Double click with the right mouse button on the installer ICON



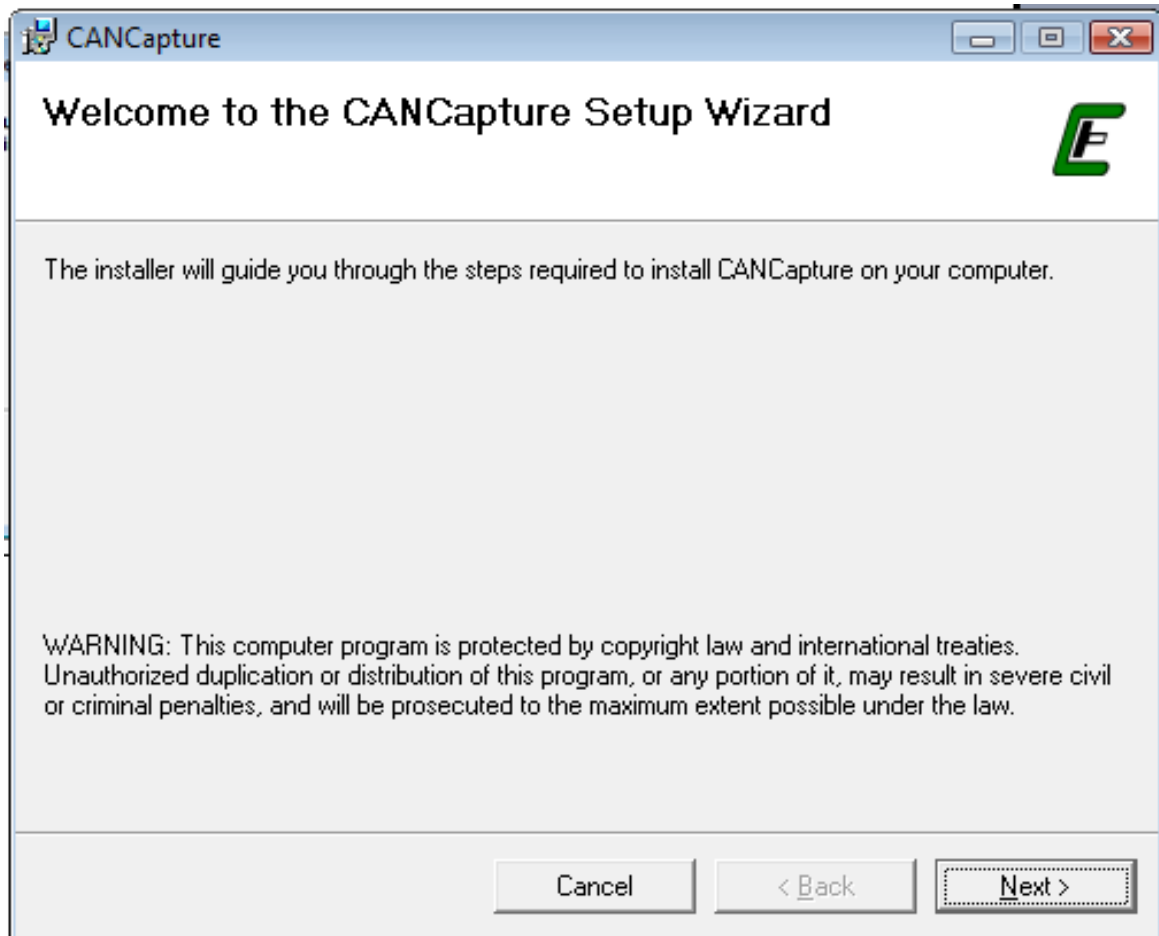
Security Warning

If the following window opens, select **[Run]** with the mouse cursor and double click with the left hand mouse button.



Welcome to the CANCapture Setup Wizard

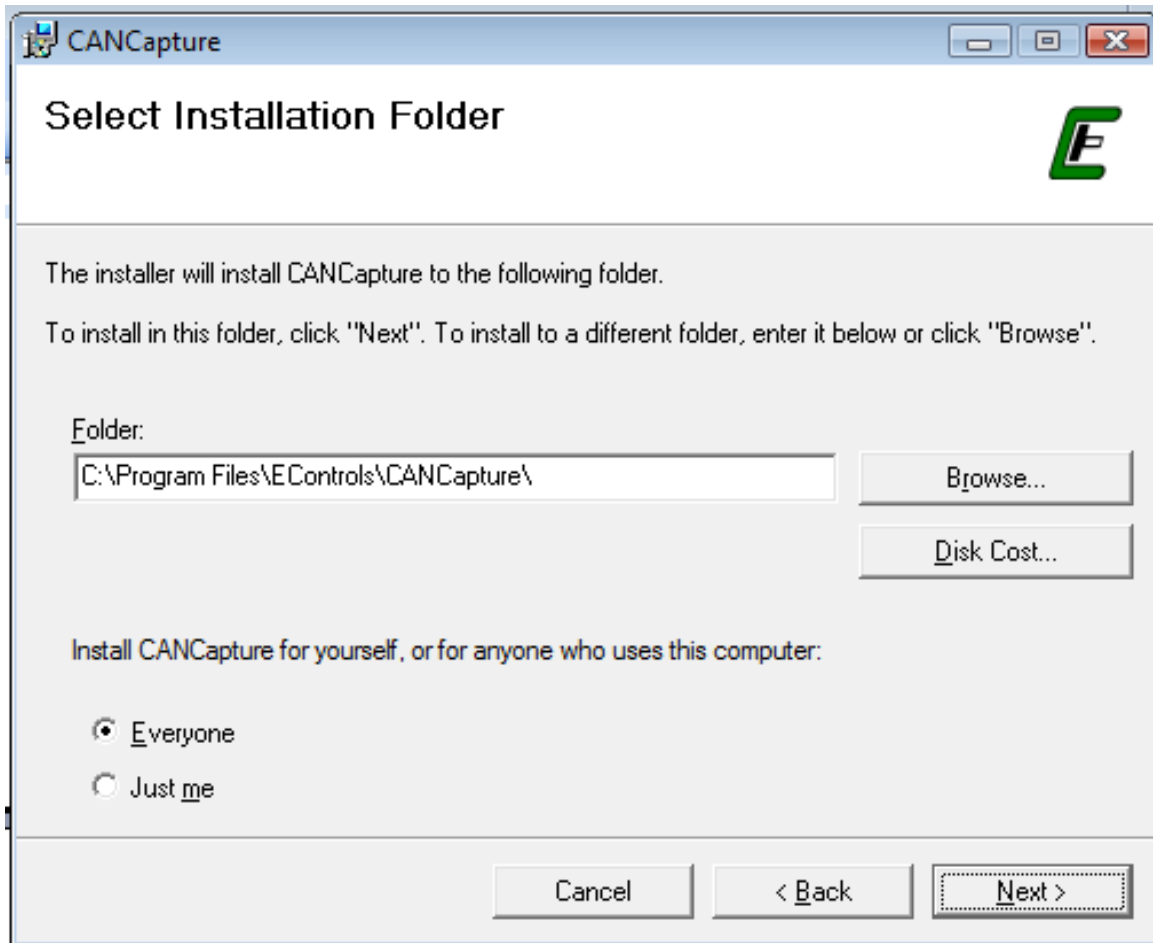
The Welcome to CANCapture Setup Wizard will now open.



Select [**Next >**] with the mouse cursor and double click with the left hand mouse button.

Select Installation Folder Window

The Select installation Folder Window will now open allowing you to select the disk drive and folder where you want to install the **CANCapture** software.

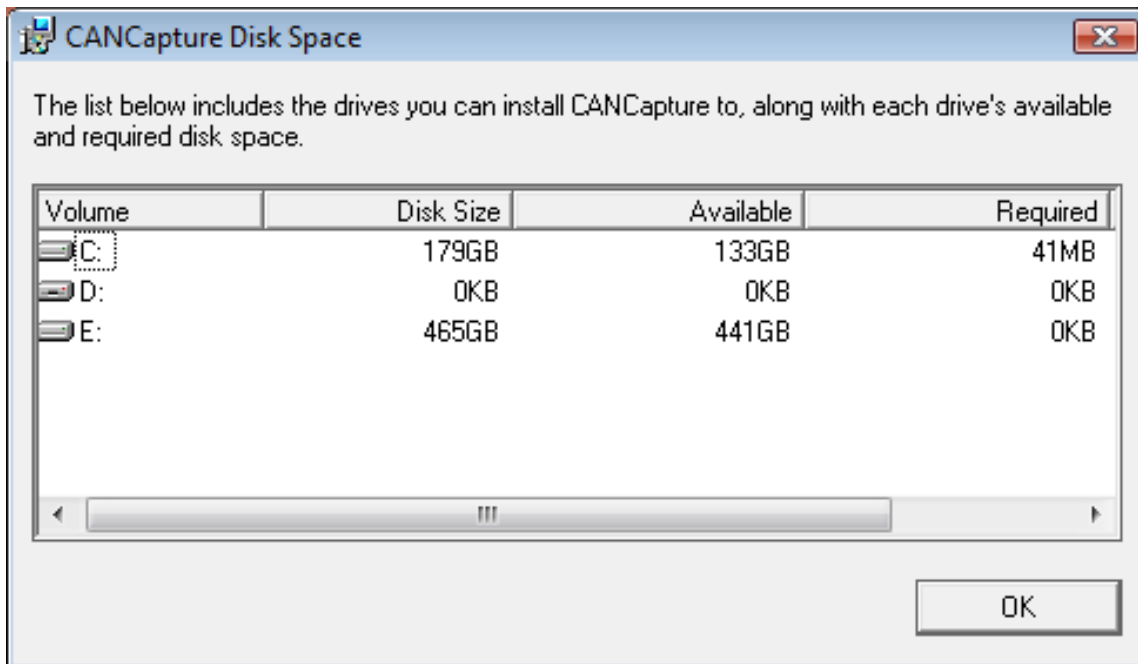


Select the folder where you want **CANCapture** to reside.

The default is [**C:\Program Files\EControls\CANCapture**]

If you want to install **CANCapture** in a different location select [**Browse...**] with the mouse cursor and double click with the left-hand mouse button. You may then browse to a different location on your computer and when you are satisfied double click the location with the left hand mouse button. The installer will return to this window with the new location indicated on the **F**older: window.

If you are concerned about the disk space required for the installation of **CANCapture** you may select **[Disk Cost...]**. The following window will open.



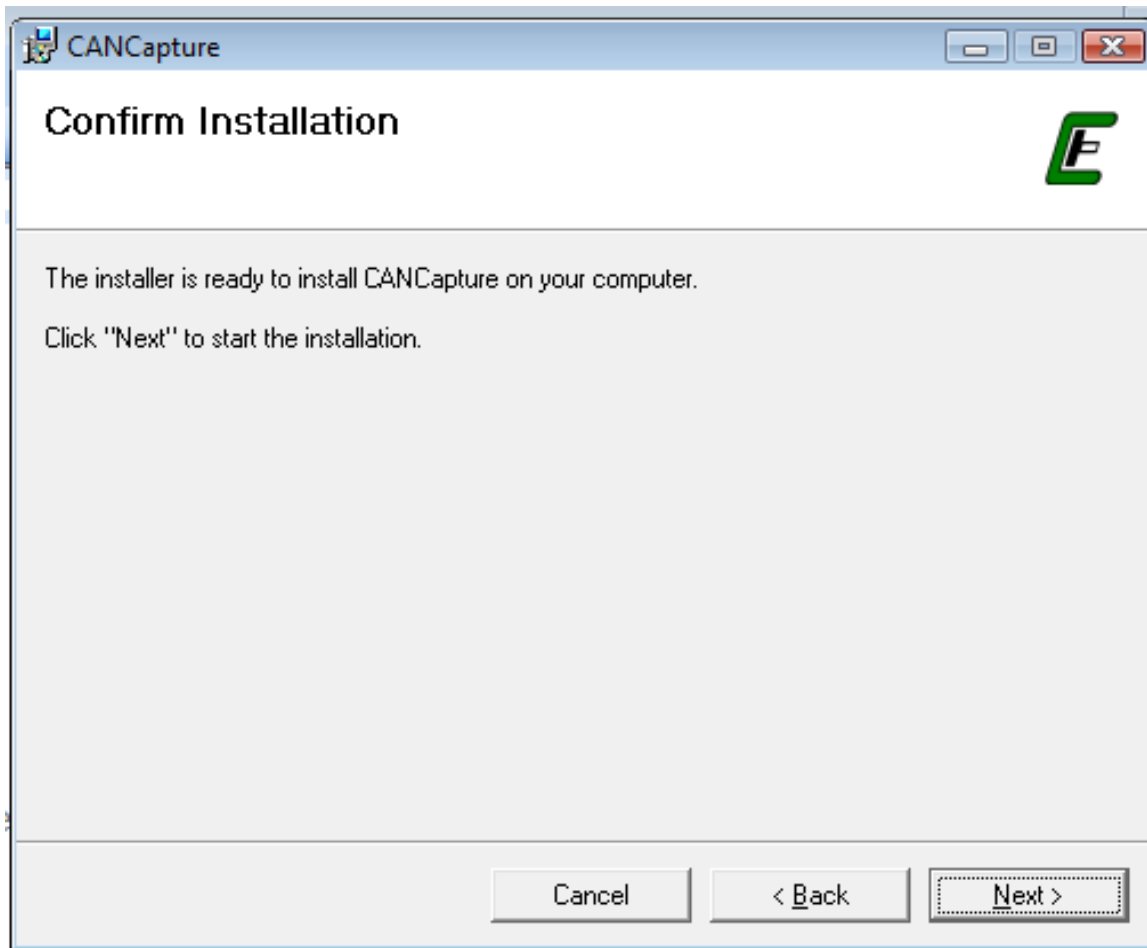
This will display the total size of each of your disk drives, the space that is available on each disk drive, and space required to install **CANCapture** on the disk drive selected. You may close this window and return to the previous window by selecting **[OK]** with the mouse cursor and clicking with the left hand mouse button.

You may now select to install the software for yourself, or for anyone that uses this computer. Select **Everyone** if you want to allow any user of this machine to have user rights to this copy of **CANCapture** or **Just me** by placing the mouse cursor over the selection circle preceding the selection and clicking with the left hand mouse button.

When you are satisfied with location where the **CANCapture** software will be installed select **[Next >]** with the mouse cursor and double click the left-hand mouse button.

Confirm Installation

The Confirm Installation Window will now appear.



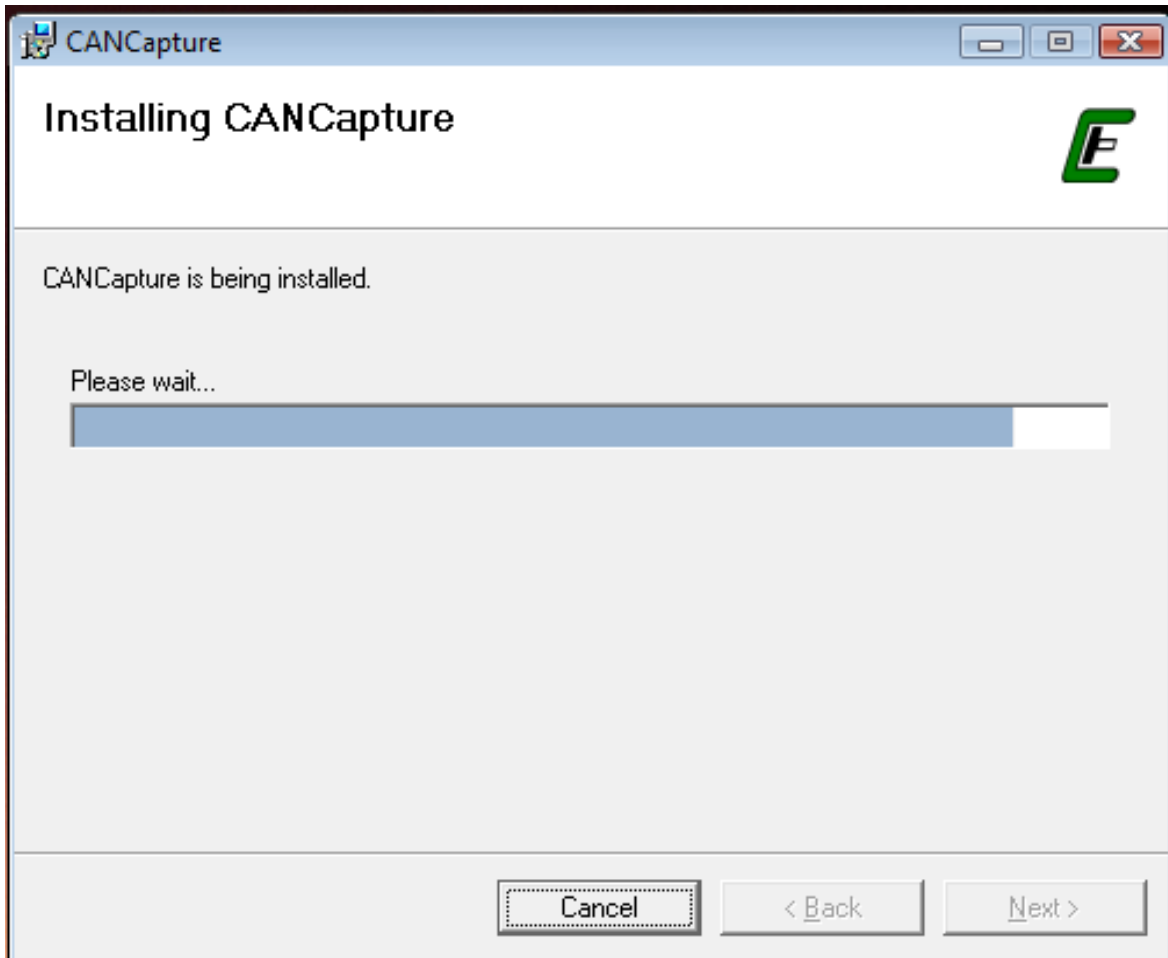
If you are satisfied with your selections and want to proceed with the installation select [**Next >**] with the mouse cursor and double click the left-hand mouse button.

Otherwise you can go back and change a selection by selecting [**< Back**] with the mouse cursor and double clicking with the left-hand mouse button.

You may cancel the entire installation by selecting the [**Cancel**] option at any time by selecting the [**Cancel**] with the mouse cursor and double clicking with the left-hand mouse button.

Installing CANCapture

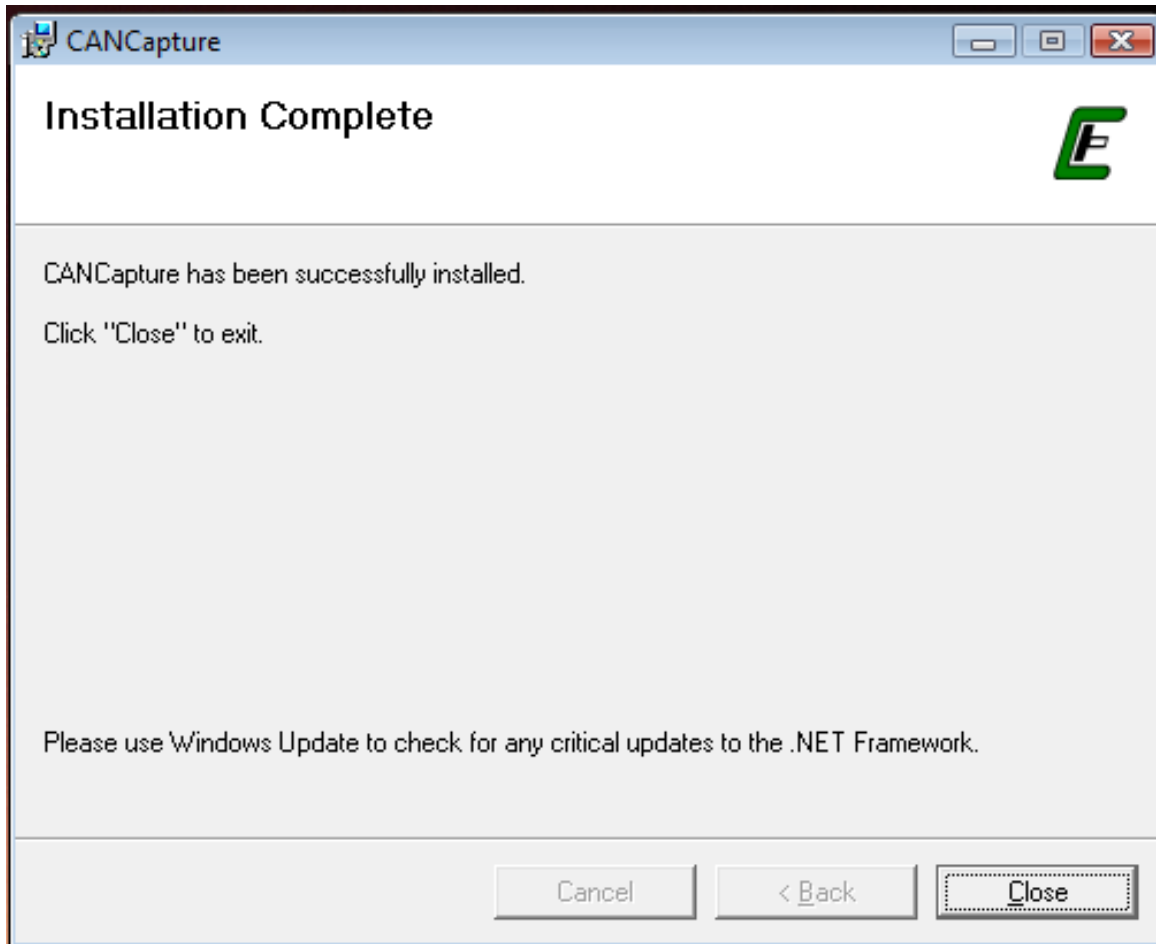
The installing **CANCapture** progress window will now open. This window indicates the current progress of the installation.



If you wish to cancel the installation select **[Cancel]** with the mouse cursor and double the left hand mouse button prior to the installation being completed.

Installation Complete

The Installation Complete window will now open indicating the installation was successfully completed. Select **[Close]** with the mouse cursor and double click with the left-hand mouse button.



You are now ready to start using **CANCapture!**